



CARBON / NITROGEN / PROTEIN ANALYZER
ELEMENTRAC CN-r

The ELEMENTRAC CN-r is the perfect solution for high-throughput laboratories needing fast and reliable nitrogen, protein, and carbon determination. This analysis method, known as Dumas analysis or the Dumas method, is a proven alternative to the traditional Kjeldahl method for determining total nitrogen and protein by combustion of the sample.

State-of-the-art hardware and an integrated PC with touchscreen allow the operator to monitor the process and control all parameters. The compact design of the ELEMENTRAC CN-r saves laboratory space. The use of non-aggressive chemicals ensures higher work safety compared to the Kjeldahl method.

Typical samples for the Dumas combustion analyzers are natural products of various compositions. The ELEMENTRAC CN-r ensures complete combustion analysis of all samples thanks to the use of a pure oxygen atmosphere during the process. Combined with the highly efficient, chromium-free catalyst, all components are fully oxidized. This prevents the formation of soot and liquid tin, contributing to the stability and accuracy of the results. Furthermore, method optimization is greatly simplified by the excess oxygen during combustion in the ELEMENTRAC CN-r.

The innovative autosampler of the ELEMENTRAC CN-r ensures clear sample identification, preventing mix-ups even in a busy laboratory environment and making it easier to handle a large number of samples.



CARBON / NITROGEN / PROTEIN ANALYZER

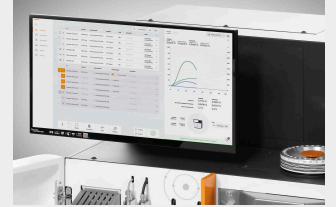
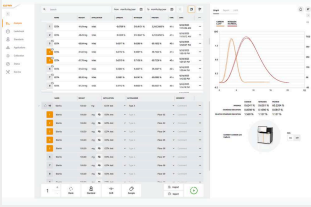
ROBUST AND RELIABLE DETERMINATION OF CARBON, NITROGEN, AND PROTEINS

- | Automated nitrogen / protein and carbon determination using the Dumas method
- | Fast results in 2 minutes and 30 seconds, and low cost per sample
- | Ergonomic design with integrated PC and tiltable touchscreen
- | Modern, cost-effective, time- and space-saving alternative to traditional Kjeldahl systems
- | Optimized for high throughput, reliability, and cost efficiency
- | Available in two configurations: carbon and nitrogen / protein analyzer, or nitrogen / protein analyzer only

ENTRAC-CN

CARBON / NITROGEN / PROTEIN ANALYZER
ELEMENTRAC CN-r

OPERASYON VE ANALİZ SÜRECİ



Step 1: Registration of the Sample in the Elements 4.0 Software

The sample is registered in the ELEMENTS 4.0 software. The weight is automatically transferred from the balance (step 1) – fast, safe, and error-free.

Step 2: Weighing and Application

Whether a few milligrams or up to 1 gram: the ELEMENTRAC CN-r offers the highest precision with various sample types – solid or liquid. These are simply weighed into tin foil or tin capsules and reliably analyzed.

3. Adım: Analiz

The samples are conveniently placed into the carousel. The CN-r automatically detects the carousel and clearly assigns all samples – ensuring a smooth, safe, and automated process.

Adım 4: Veri çıkışı ve dışa aktarma

Analiz başladıktan 120 ila 180 saniye sonra, ölçülen konsantrasyonlar bir rapor olarak veya LIMS aracılığıyla dışa aktarılabilir.

CARBON / NITROGEN / PROTEIN ANALYZER
ELEMENTRAC CN-r

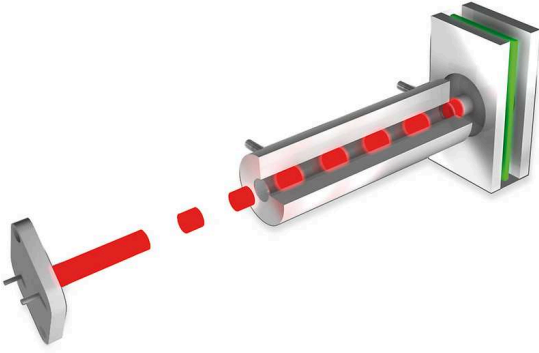
KONFIGÜRASYONLAR

The ELEMENTRAC CN-r can be flexibly configured:

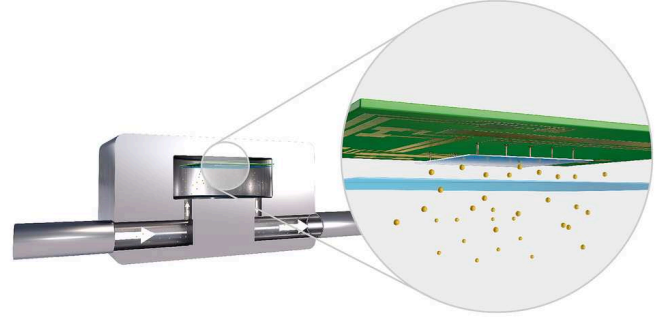
- | Nitrogen/Protein determination
- | Nitrogen/Protein and Carbon determination

While carbon is detected as CO₂, nitrogen determination is performed in elemental form using a highly sensitive thermal conductivity cell (TCD). Helium is used as the standard carrier gas (argon optional). This ensures maximum sensitivity in nitrogen analysis.

NON-DISPERSIVE INFRARED DETECTORS (NDIR)



YÜKSEK HASSASIYETE SAHİP TERMAL İLETKENLİK HÜCRESİ



CARBON / NITROGEN / PROTEIN ANALYZER
ELEMENTRAC CN-r

ENTEĞRE STANDART ÇÖZÜMLER

All chemicals required for operation are ergonomically arranged at the front and safely hidden behind a door during routine use. Maintenance is especially user-friendly: combustion and reduction tubes can be replaced without tools in just a few minutes. This well-thought-out design reduces time expenditure, increases reliability, and ensures maximum reproducibility of your analyses.

TOUCHSCREEN & INTEGRATED PC

The ELEMENTRAC CN-r is equipped with a modern touchscreen that can be placed flexibly either directly on the device or conveniently on the desk. Thanks to the integrated PC, no additional hardware is required. The ELEMENTS 4.0 software can be intuitively operated via touchscreen – or classically with a keyboard and mouse. With the available USB ports, you can easily connect peripheral devices such as a keyboard, mouse, or a balance.

NETWORKING & DATA ACCESS

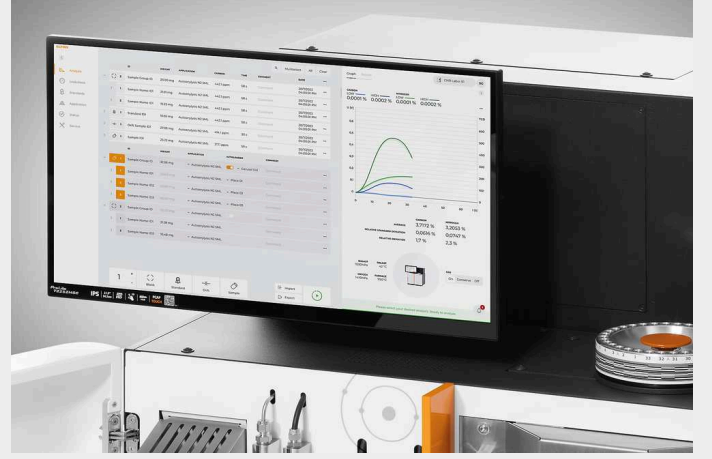
The CN-r can be easily integrated into your network. This allows you to transfer results directly into your LIMS or access the device software from your office PC. Whether recalculations, evaluations, or entering new samples: you always have full access and can complete your tasks easily and efficiently – regardless of the device's location.

HIGH PERFORMANCE

Analyze your samples in less than 3 minutes! Our intelligent processing allows simultaneous combustion of the current sample and analysis of the previous sample (so-called interleave analysis). Get results over 70 times faster than with the Kjeldahl method and benefit from unparalleled speed in your analysis workflow.

EFFORTLESS MAINTENANCE

All consumables can be replaced in less than 15 minutes, keeping your system always ready for use. An optimized workflow with quick and effortless maintenance ensures smooth operation with minimal downtime.



ELEMENTRAC CN-r'ye zaten entegre edilmiş olan özelliklere ek olarak, verimliliği artırmak ve uygulama aralığını genişletmek için başka seçenekler de mevcuttur.

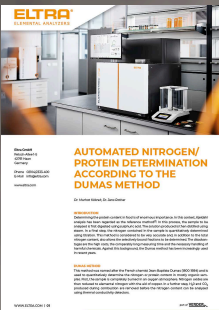
CARBON / NITROGEN / PROTEIN ANALYZER
ELEMENTRAC CN-r

YAZILIM

The comprehensive ELEMENTS software is an essential component of all elemental analyzers of the ELEMENTRAC generation.

A central window (analysis and results) is the starting point from which all functionalities required for the daily routine are easily accessible. From here it is possible to group and export analyzed samples or to register and analyze new samples. The user can access various subordinate functionalities such as application settings, calibration, diagnostics, audit trail, user group management or status and is FDA 21 CFR Part 11 compliant.

In addition, thanks to the network integrity and web browser architecture, you can access the device from any computer in the company network and have all data available at any time.



UYGULAMA NOTLARI

PROTEIN DETERMINATION IN MILK WITH DUMAS METHOD

The Dumas method is a valid alternative for determining protein content in milk, providing quick and accurate results without the use of harmful chemicals. Its efficiency and safety



make it increasingly popular compared to the Kjeldahl method. Read our application note...



CARBON / NITROGEN / PROTEIN ANALYZER
ELEMENTRAC CN-r

TIPIK ÖRNEK MALZEMELER

The Dumas method for protein and nitrogen determination is internationally recognized and validated by leading organizations such as AOAC, AACC, ISO, DIN, AOCS, and OIV.



PIRINÇ

- | Determination of protein content for nutritional labeling and quality control
- | Evaluation of rice by-products (bran, husks) for animal feed regarding nutrient composition
- | Supporting breeding and research for improved rice varieties (higher protein content, better nutritional properties)



TOPRAK

- | Soil samples to evaluate nitrogen availability for plants
- | Fertilizers to determine nitrogen content and thereby fertilizer quality



MILK & DAIRY PRODUCTS

- | Analysis of solid or liquid samples such as cheese, blue cheese, yogurt, and milk
- | Determination of protein content for nutritional labeling and quality control
- | The ELEMENTRAC CN-r meets or exceeds the requirements of all common international standards, such as DIN EN ISO 14891



MEAT & MEAT PRODUCTS

- | Determination of protein content for nutritional labeling and quality control
- | Verification of meat authenticity and prevention of food fraud
- | Monitoring protein levels in processed meat products



COAL

- | Measurement of nitrogen content to assess quality
- | Control of nitrogen levels in coke production
- | Optimization of combustion processes and reduction of emissions



GÜBRE

- | Determination of nitrogen concentration to ensure fertilizer efficiency
- | Quality control and compliance with agricultural standards
- | Evaluation of nutrient availability for improved crop yield

CARBON / NITROGEN / PROTEIN ANALYZER
ELEMENTRAC CN-r

TEKNIK VERİ

Measurement ranges	Nitrogen: 0.03 mg to 300 mg Carbon: 0.02 mg to 175 mg
Typical weights	Up to 1.0 g, 0.5 g nominal
Analysis time	< 3 min
Detectors	Thermal conductivity detector (N) NDIR (C)
Typical samples	Food, feed stuff, fuels (coal and coke), environmental samples and fertilizers
Reagents	Magnesium perchlorate, sodium hydroxide, copper, aluminum oxide
Power supply	230 VAC \pm 10 %, 50/60 Hz
Gerekli gaz	Oxygen (99.999% purity) Helium (99.996% purity) Compressed air (oil and water free)
Configurations	CN-r, N-r
Ağırlık	135 kg
Ebatlar (G x Y x D)	(W x H x D) 75,7 x 78,5 x 62 cm

www.eltra.com/cn-r

SIPARIŞ BİLGİSİ

ELEMENTRAC® CN-R

Measuring range for 300 mg sample weight

88200-4000		CN-r	0.007 – 58.3 % C (0,02 – 175 mg C abs.) 0.01 – 100 % N (0,03 – 300 mg N abs.)
88200-4001		CN-r	0.01 – 100 % N (0,03 – 300 mg N abs.)

GEREKLI AKSESUARLAR

Linux based PC is already integrated, as well as 21,5 " Touchscreen monitor

88400-0645	Terazi (çözünürlük 0.0001 g)
------------	------------------------------

İLK İŞLEMLER İÇİN GEREKLI SARF MALZEMELERİ / KİMYASALLAR

88500-0021	CN-r / N-r Starting kit
------------	-------------------------

90200		Anhydron
-------	---	----------

90210		Sodium hydroxide
-------	---	------------------

DIĞER SEÇENEKLER VE SARF MALZEMELERİ

88400-0474	Tin foils, 36x36 mm, -HR-(200 pieces / packing unit)
------------	--

88400-0640	Copper Turnings, 200 g
------------	------------------------

88400-0638	N Catalyst, 50 g
------------	------------------

88400-0637	Large Ceramic Ash Crucibles-HR-(10 pieces / packing unit)
------------	---

88400-0636	Copper sticks-HR-(100 g/packing unit)
------------	---------------------------------------

88400-0635	Aluminium oxide pellets (Furnace reagent); 200 g
------------	--

88400-0508		Çelik yün, 454 g
------------	---	------------------

90330		Quartz wool (50 g)
-------	---	--------------------

90332



Glas wool (50 g)

88400-0644

Tinfoil, 51x51 mm (200 pieces / packing unit)

FURTHER HARDWARE TOOLS (SPATULA, TONGUES)

88400-0229



Cımbız (160 mm), kıvrımlı, 1 adet

88400-0472



Cımbız (145 mm), düz, 1 adet

88400-0475



Birden fazla tartım prosedürü için 6 spatula ve 1 cımbız içeren set

TYPICAL SPARE PARTS

88400-0006



Reagent glass tube 20x280 mm

11064-3002

Reagent tube 305x20

40000-3512

Yanma tüpü

KALIBRASYON MALZEMELERİ

PRIMARY SUBSTANCES

90710-3010



EDTA, 50 g

90710-3030

Succrose

90810



Kalsiyum karbonat

COAL PREMIUM

92550-3010

Specified for C;H;N;S ; TGA

92550-3020



Specified for C;H;N;S ; TGA

92550-3040



Specified for C;H;N;S ; TGA

92550-3060



Specified for C;H;N;S ; TGA

COKE PREMIUM

92560-3010



Specified for C;H;N;S ; TGA

PET COKE PREMIUM

92570-3020

Specified for C;H;N;S ; TGA

92570-3020

Specified for C;H;N;S ; TGA